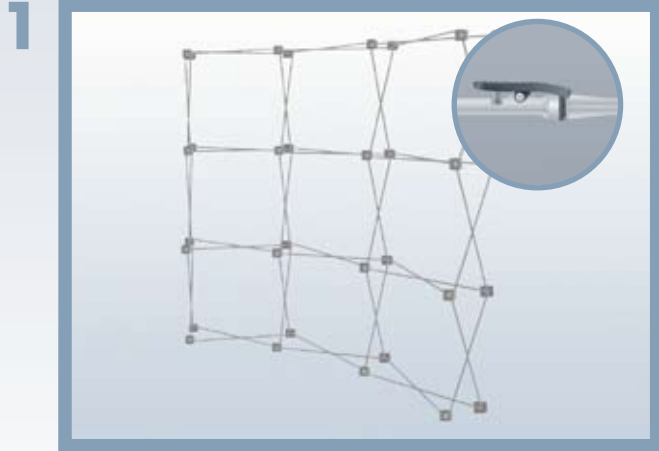


# SET UP

## POP UP MAGNETIC



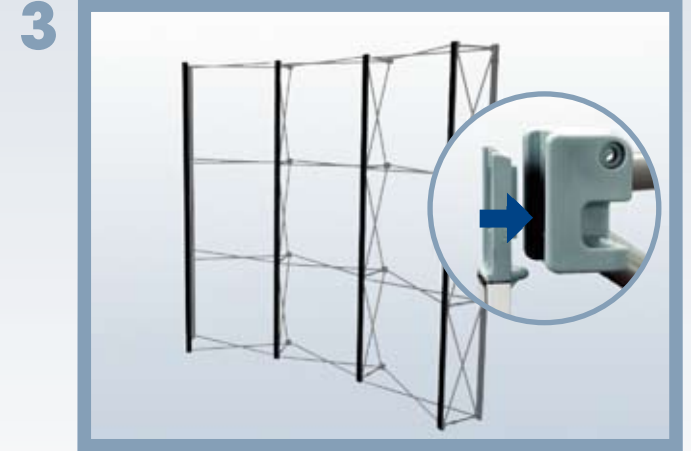
PORTABLE DISPLAYS



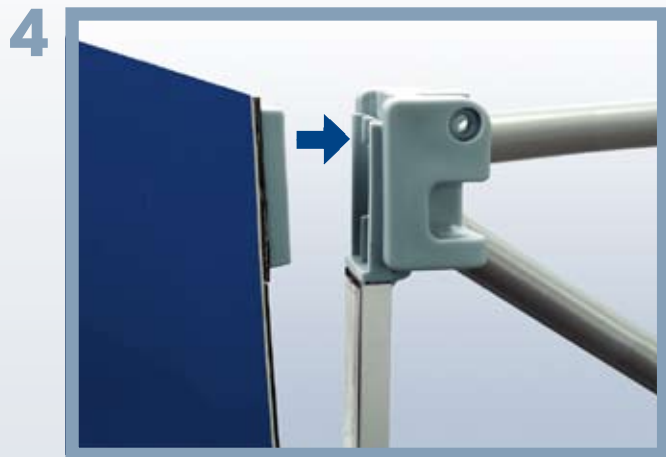
Expand the system and make sure that the lockers click in each other.



Unfold one magnetic bar at a time and then go to step 3.



Click the magnetic bar into the hubs on the system. Repeat until all the magnetic bars are in place.



Click the hangers on top of each graphic panel onto the magnetic slot located on the magnetic bars.



Attach the lights to the top scissor of the system. The tracks in the spotlight fastener will guide it to the proper location.



Check that all graphic panels are flat. Adjust as needed by gently smoothing with your hand.

