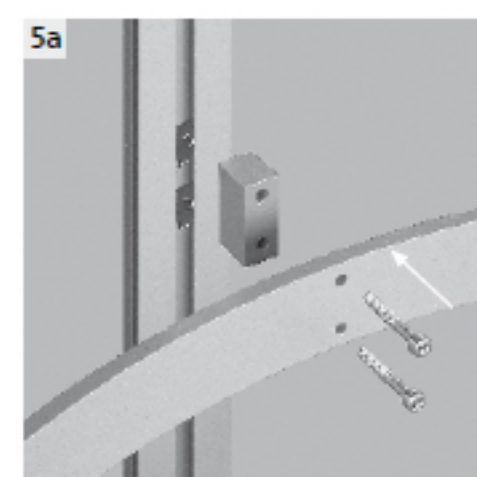
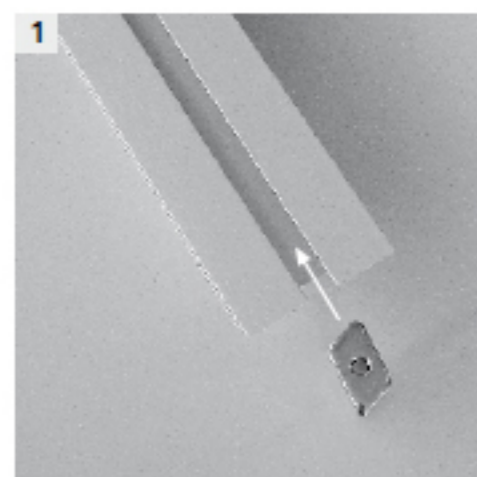
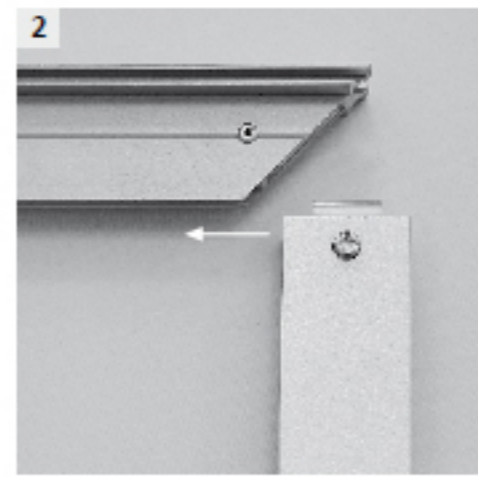
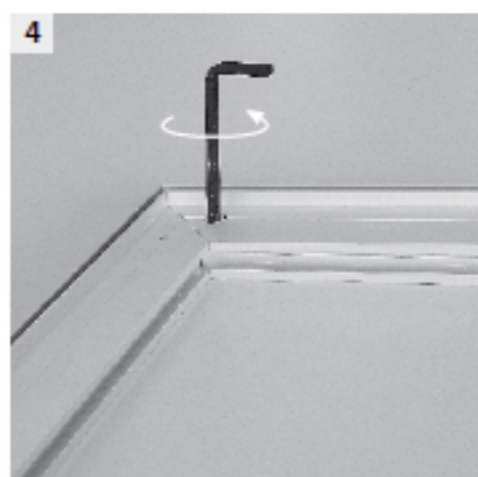
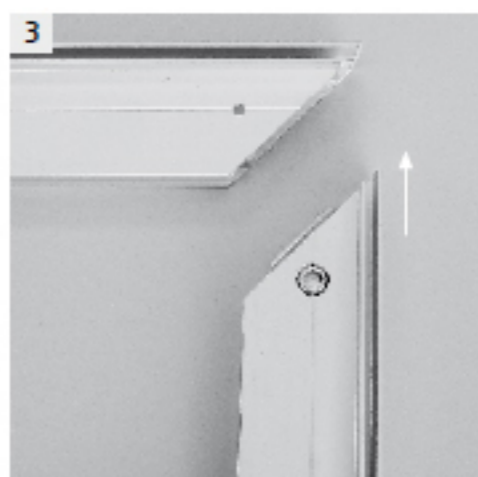


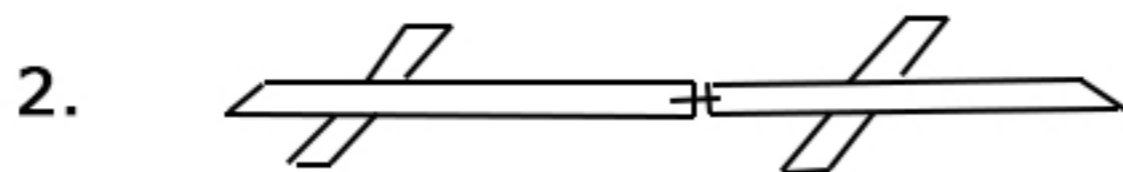
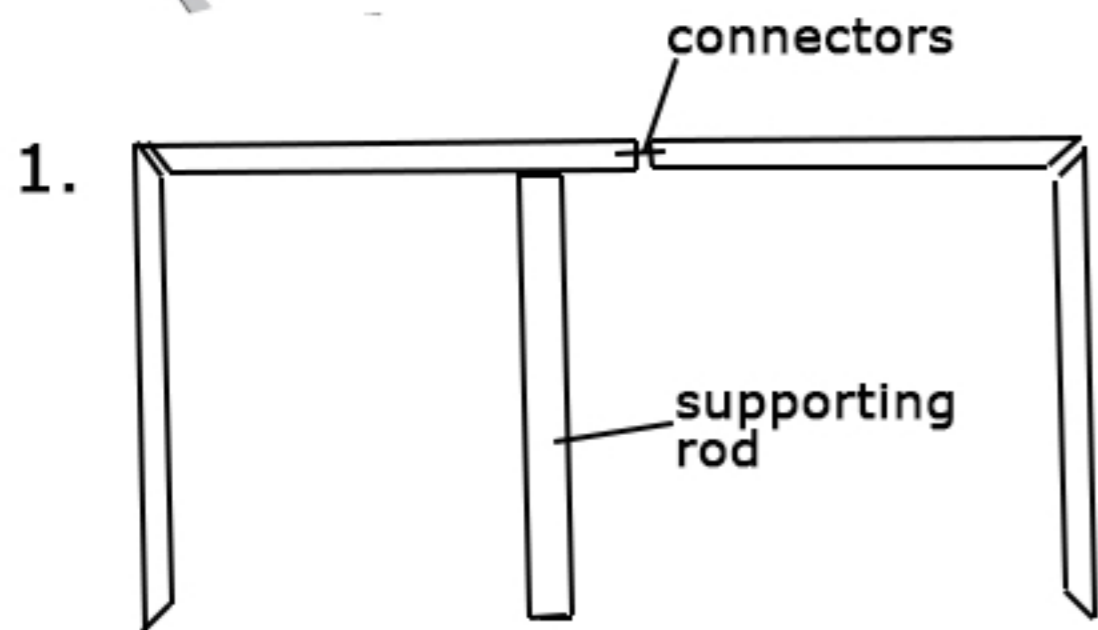
Alu frame set up instruction



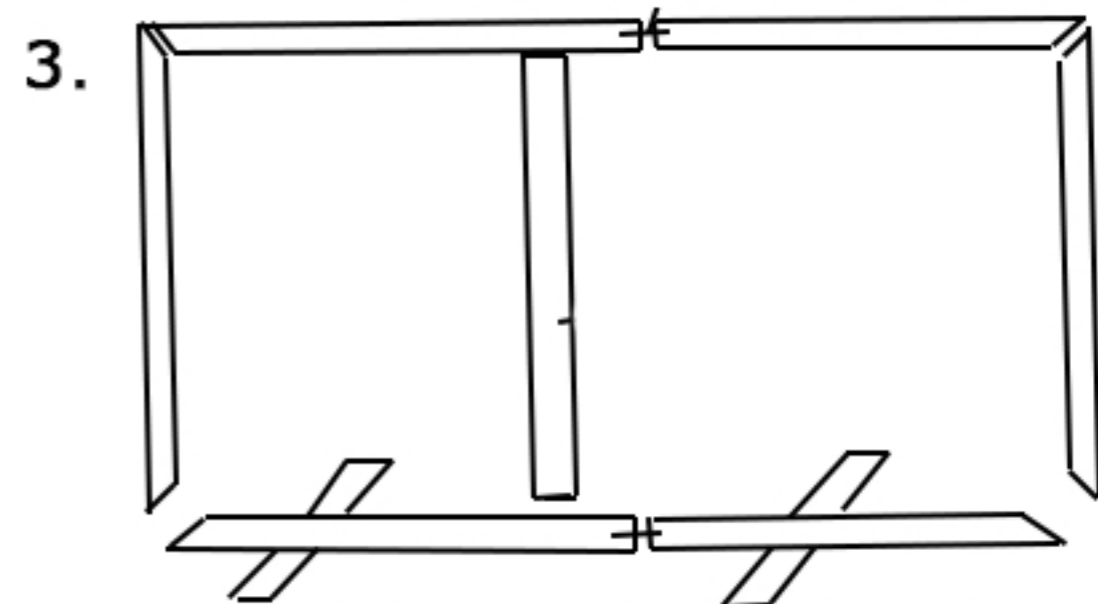
Connecting the parts

Connect inside supporting rod

Connect legs



2. Build the floor part horizontal rod with the connectors. Settle the two leg part with the screws.



3. Connect the floor part with the left to the upper part. Connect the next screw of the supporting rod to the floor part. Mount the textile graphics panel.

Build the upper part U shape. Use the connectors to connect the two part horizontal rod. Settle the supporting rod with one screw.